

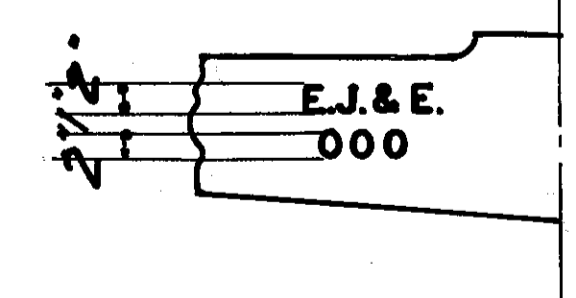
PAINTING.

UNDERFRAME:-
 ONE COAT METAL PRIMER
 ONE COAT CAR CEMENT

SIDES & ENDS - EXTERIOR:-
 ONE COAT METAL PRIMER.
 TWO COATS FINISH PRINT - DU-PONT ORANGE N° 81-8963.
 ALL SAFETY APPLIANCES TO BE PAINTED YELLOW.
 MONOGRAM, ALL 9" LETTERS & NUMERALS, 8" x 8" REFLECTORS
 ON ENDS TO BE SCOTCH-LITE.

ROOF -
 ONE COAT SHERWIN WILLIAMS 6 DIAMOND BLACK. GALV. METL. NOT PAINTED

TRUCKS:-
 ONE COAT OF APPROVED BLACK FREIGHT CAR PAINT.



A- REMOVED MONOGRAM

ELGIN JOLIET & EASTERN RY. CO
 JOLIET, ILLINOIS.

LETTERING.
STEEL WAY CAR.

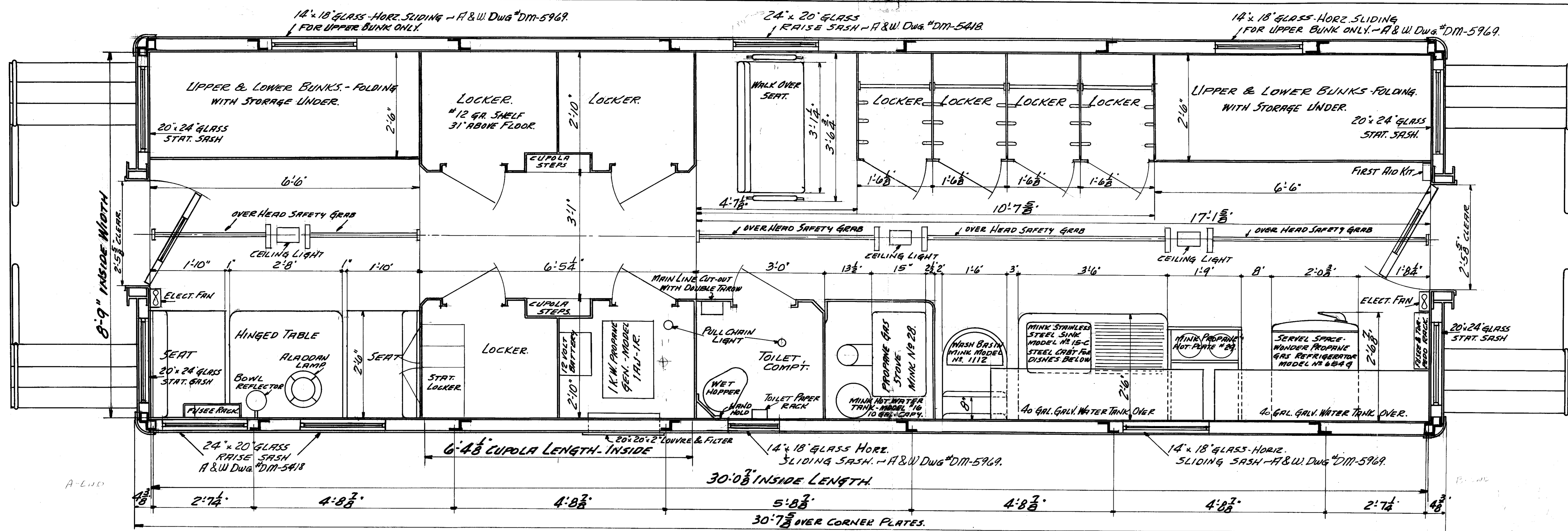
SERIES 500-524.

DRAWN C.J.L. 1-18-56.
 SCALE 3/4" = 1'-0"
 CHECKED W.d.G. M.E.

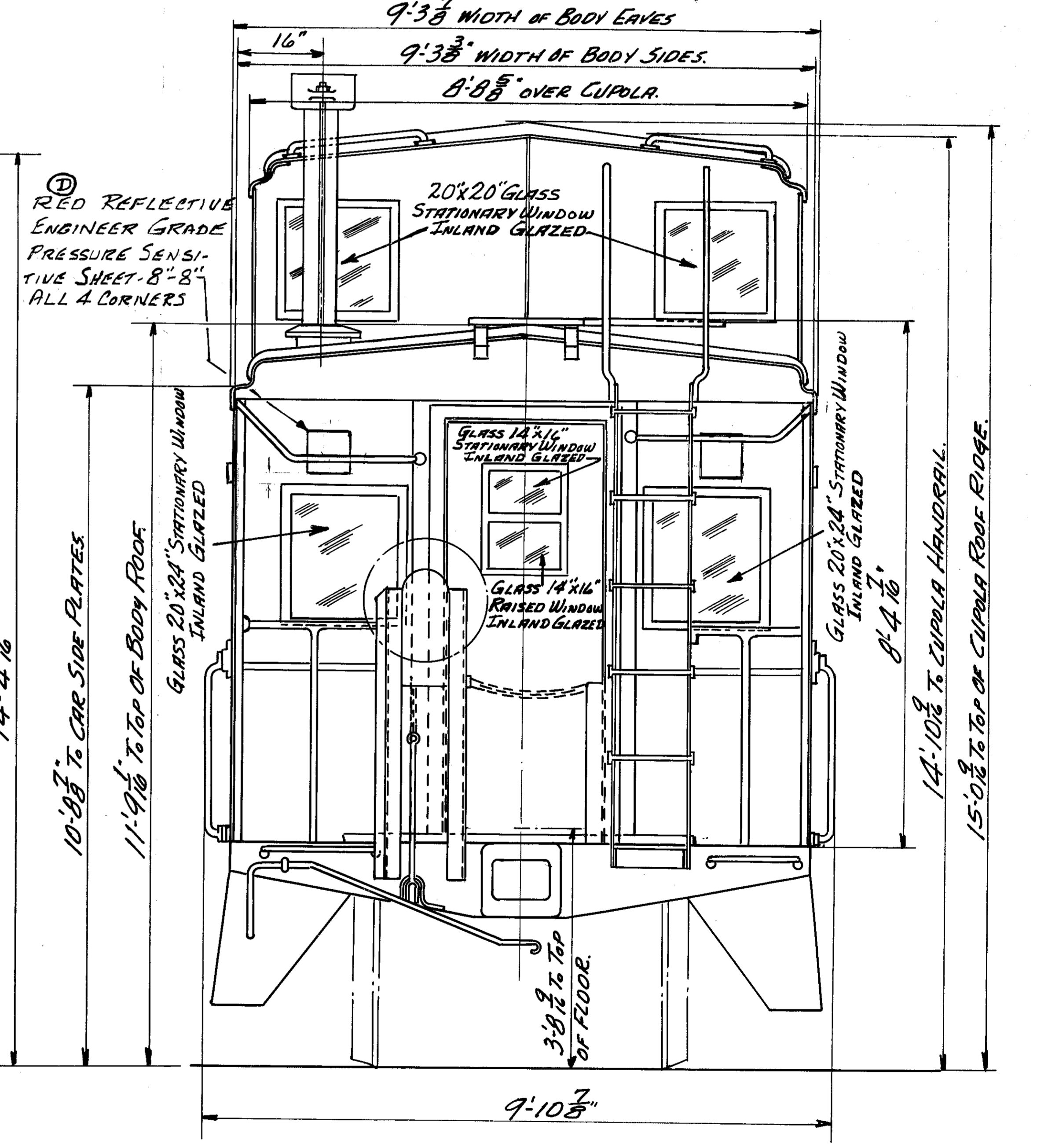
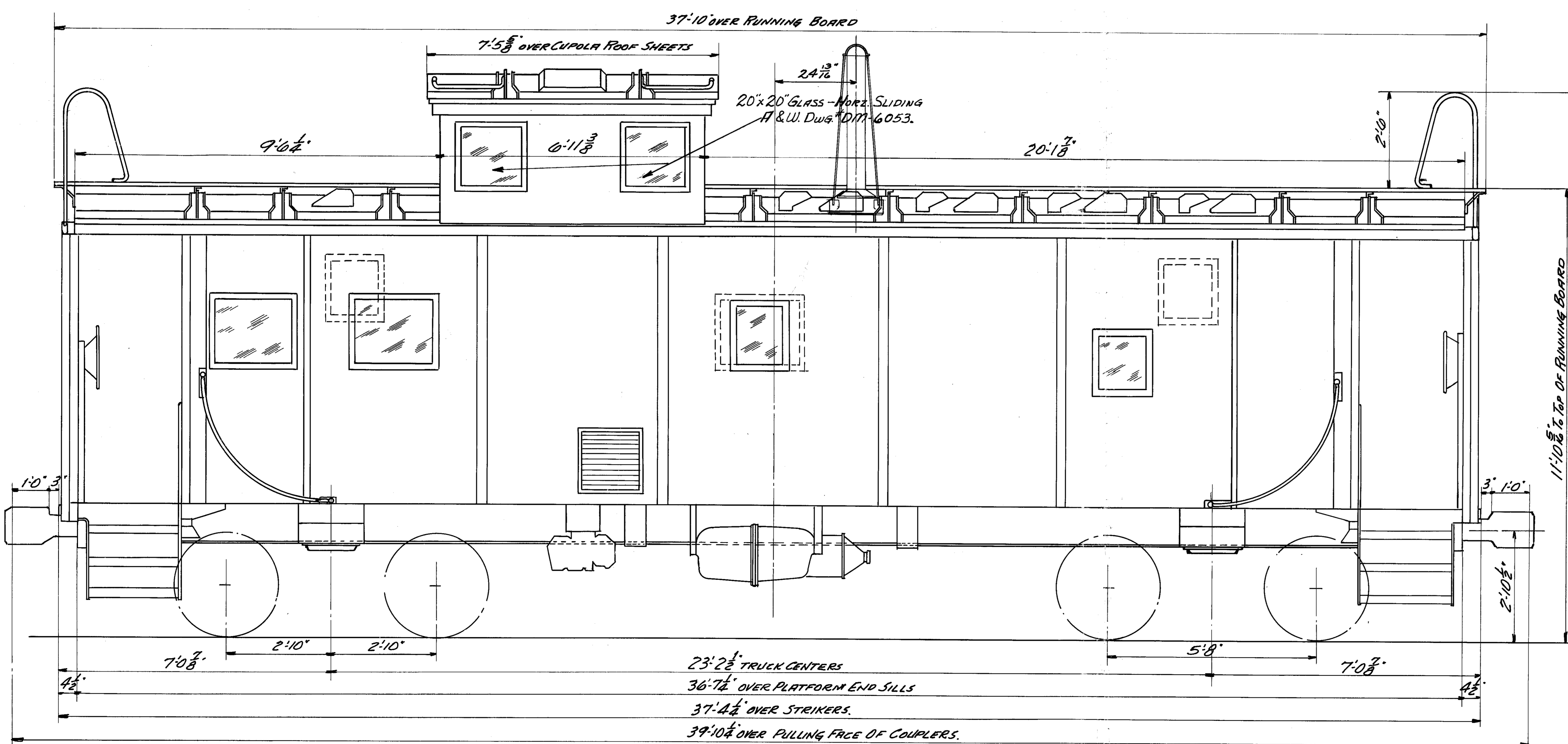
APPROVED
H. E. Stuber
 S.M.P. & E.

SHEET NO.
7470.

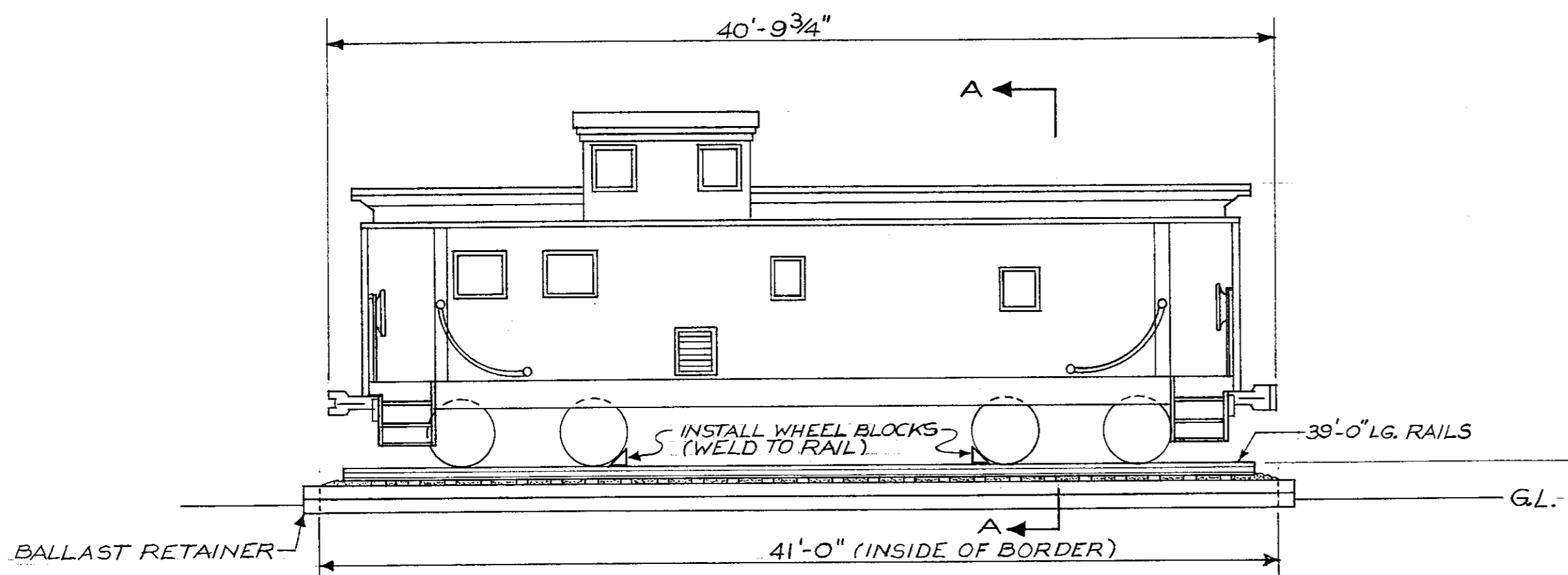
12-8-53
 A



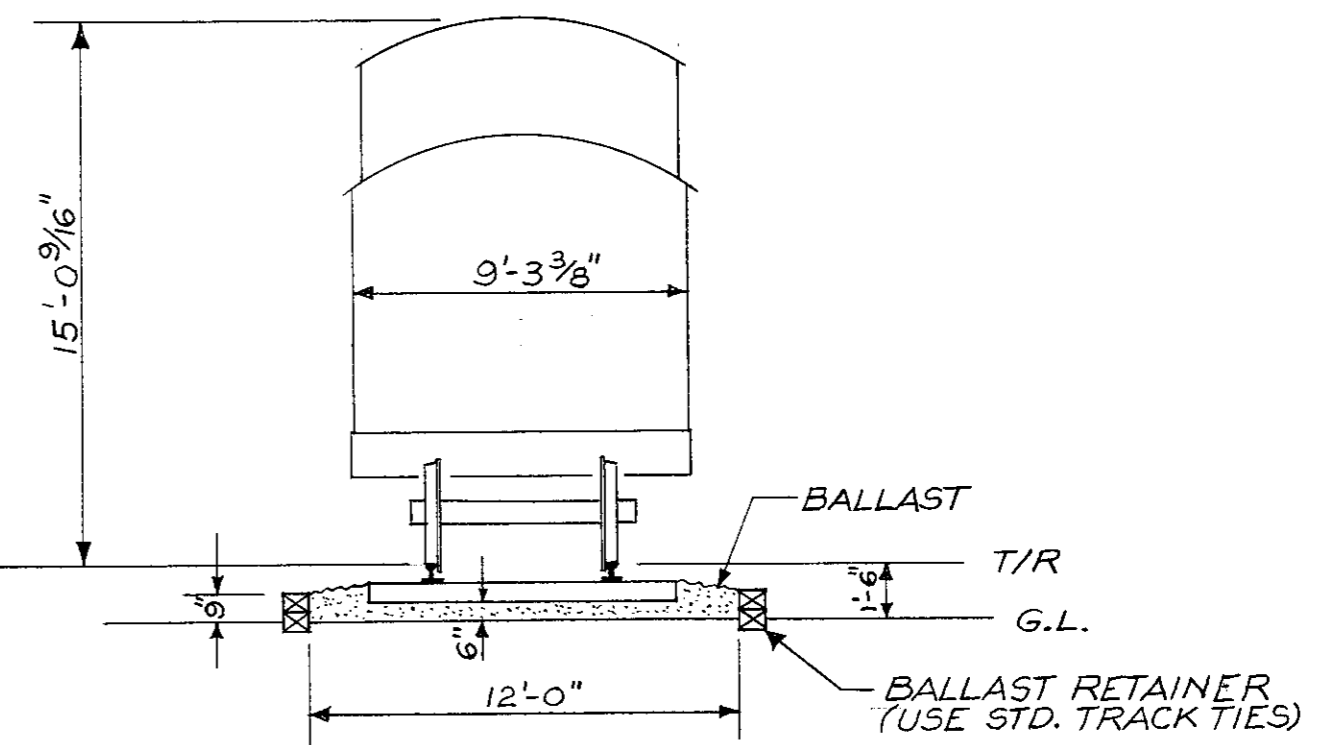
NOTE -
INSIDE LINING - #16 GA.
OUTSIDE PLATE - #10 GA.



12-3-58 FLOOR PLAN REV'D - GEN'L. ARRNGMT. ADDED.
REVISIONS.
ELGIN JOLIET & EASTERN RY CO.
JOLIET, ILLINOIS.
FLOOR PLAN & GENERAL ARRANGEMENT.
STEEL WAY CAR.
SERIES 500-549.
DRAWN C.J.L. 6-23-55
SCALE 1/2" & 1" = 1'-0"
CHECKED W.L.G. M.E.
APPROVED A. E. Nichol S.M.R.&E.
SHEET NO. 7428
D. C. B. A.



— PLAN —



— SECT. A-A —

NOTES:

1. CABOOSE TO BE SET ON 39' TRACK PANEL, CONSISTING OF 2 EA. 39 FT. LONG RAILS AND 24 EA. TRACK TIES.
2. PANEL TO BE SET IN BALLAST AS SHOWN. (APPROX. 15 CY. REQ'D.)
3. PROVIDE 6" OF BALLAST BELOW BOTTOM OF TIES.
4. BALLAST RETAINER MAY BE CONSTRUCTED OF TRACK TIES OR SIMILAR MATERIAL.

REVISIONS			
DATE	DESCRIPTION	BY	CHK.

ELGIN, JOLIET & EASTERN RAILWAY COMPANY
 OFFICE OF CHIEF ENGR. JOLIET, ILLINOIS

EST. NO. _____ **THE J** A.F.E. NO. _____

**E. J. & E CABOOSE NO. 534
 FOR
 CAROL STREAM PARK DISTRICT**

DRAWN BY PFV DATE MARCH, 1987
 CHECKED BY _____ SCALE 3/16" = 1'-0"
 IN CHARGE OF DKT SHEET 1 OF 1

FILE NO. _____ **1**